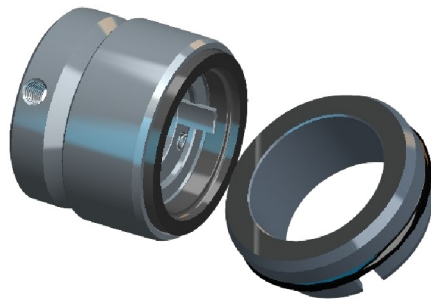


结构特点 Design features

- 内装、单端面、多弹簧、平衡型、拨叉传动结构，任意旋向，弹性元件不与介质接触，抗阻塞能力强。
- Internally mounted, single face, multiple spring, balanced structure, by means of shifting fork drive, any rotation direction, Spring no-touch to medium, has a stronger antiblocking condition.

材料 Materials(to DIN24960)

- 旋转环 Rotary Ring: A、B、U12、U22、Q12、Q22
- 静止环 Stationary Ring: U1、U12、Q2、U22、V1
- 辅助密封 Auxiliary Seal: P、E、V、M1
- 弹簧及其他结构件材料 Spring and Other Parts: F、G



适用范围 Operating limits

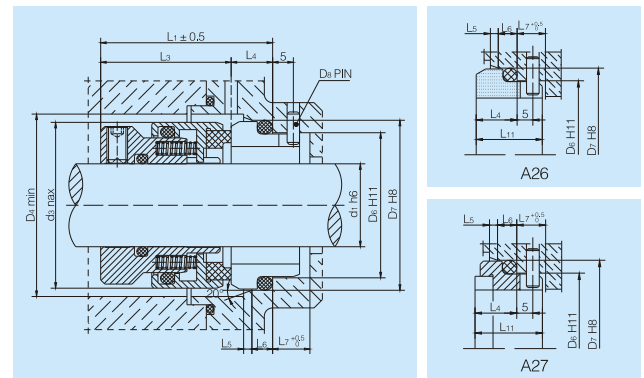
- 压力 Pressure: 真空 Vacuum~10MPa
- 温度 Temperature: -40~200℃
- 线速度 Speeds: ≤30m/sec
- 粘度 Viscosity: ≤1.0Pa.s(1000cp)软对硬(Soft VS Hard)
≤3.5Pa.s(3500cp)硬对硬(Hard VS Hard)

用途 Applications

用于造纸、制糖、给排水、污水处理等工业的泵类的旋转轴密封。
Used in all of rotating equipment, pumps, to suit industries such as papermaking, sugar-making industry, water and sewage water.

介质 Medium

含固体颗粒杂质、高粘度介质及其它弱腐蚀性溶液。
Solid grains medium, high viscosity medium and other weak corrosive fluid.



型号 Model	d1	d3	D4	D6	D7	d8	L1	L3	L4	L5	L6	L7	L11
CN BK-35	35	58	61	54	61	4	55.0	44.0	11.0	2.0	6	9	17.5
CN BK-38	38	60	63	56	63	4	55.0	44.0	11.0	2.0	6	9	17.5
CN BK-40	40	63	66	59	66	4	56.0	45.0	11.0	2.0	6	9	17.5
CN BK-43	43	65	70	62	70	4	58.0	45.0	13.0	2.5	6	9	19.5
CN BK-45	45	69	73	65	73	4	58.0	45.0	13.0	2.5	6	9	19.5
CN BK-48	48	71	75	67	75	4	58.0	45.0	13.0	2.5	6	9	19.5
CN BK-50	50	74	78	70	78	4	58.0	45.0	13.0	2.5	6	9	19.5
CN BK-53	53	82	85	77	85	4	58.0	45.0	13.0	2.5	6	9	19.5
CN BK-55	55	82	85	77	85	4	58.0	45.0	13.0	2.5	6	9	19.5
CN BK-58	58	87	92	83	92	4	66.5	51.5	15.0	2.5	7	9	21.5
CN BK-60	60	87	92	83	92	4	66.5	51.5	15.0	2.5	7	9	21.5
CN BK-63	63	92	97	88	97	4	69.5	54.5	15.0	2.5	7	9	21.5
CN BK-65	65	92	97	88	97	4	69.5	54.5	15.0	2.5	7	9	21.5
CN BK-68	68	100	105	95	105	4	70.0	54.5	15.5	3.0	7	9	22.0
CN BK-70	70	100	105	95	105	4	70.0	54.5	15.5	3.0	7	9	22.0
CN BK-75	75	105	110	100	110	4	80.0	64.5	15.5	3.0	7	9	22.0
CN BK-80	80	110	115	105	115	4	80.0	64.5	15.5	3.0	7	9	22.0
CN BK-85	85	115	120	110	120	4	80.0	64.5	15.5	3.0	7	9	22.0
CN BK-90	90	120	125	115	125	4	80.0	64.5	15.5	3.0	7	9	22.0